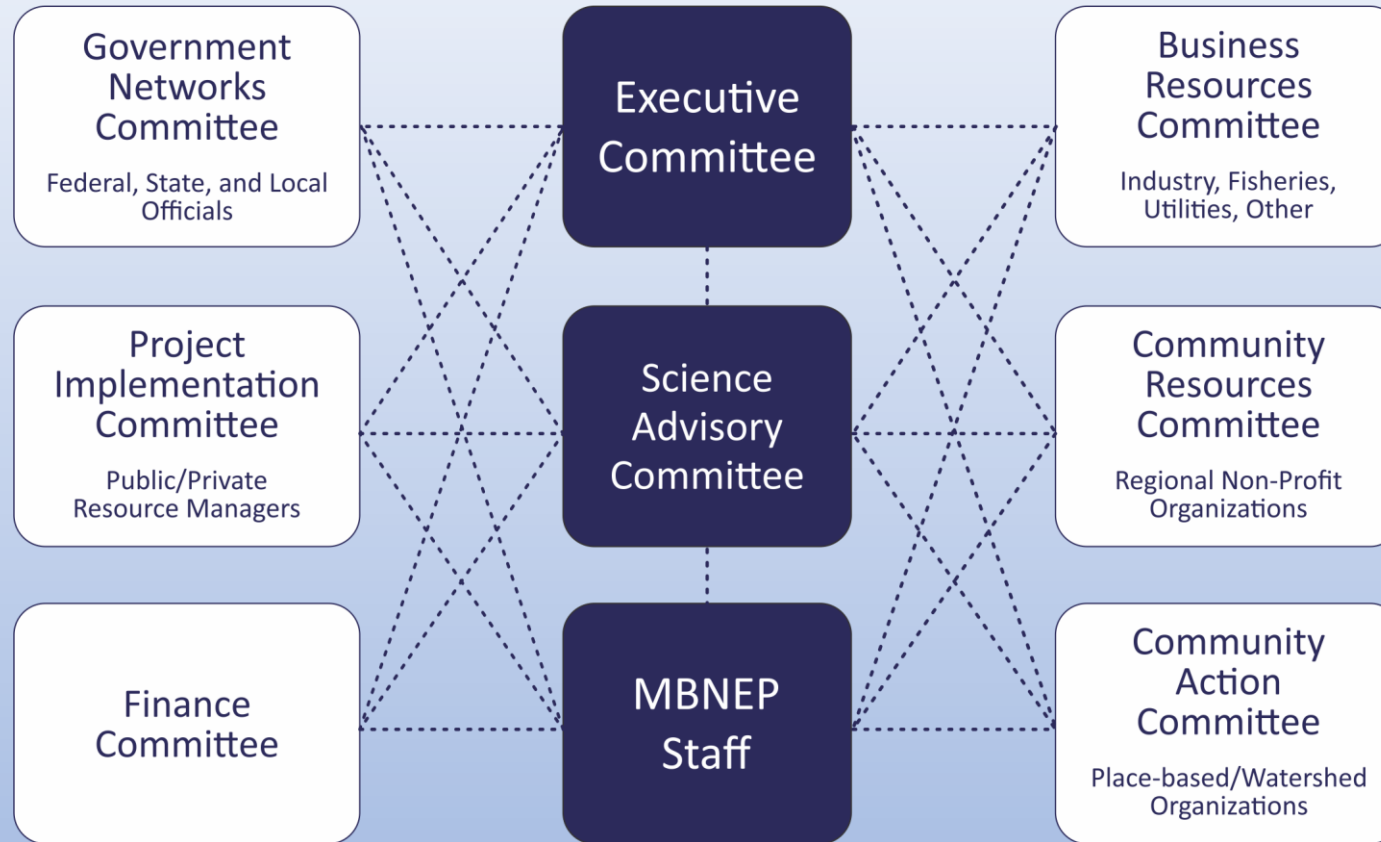


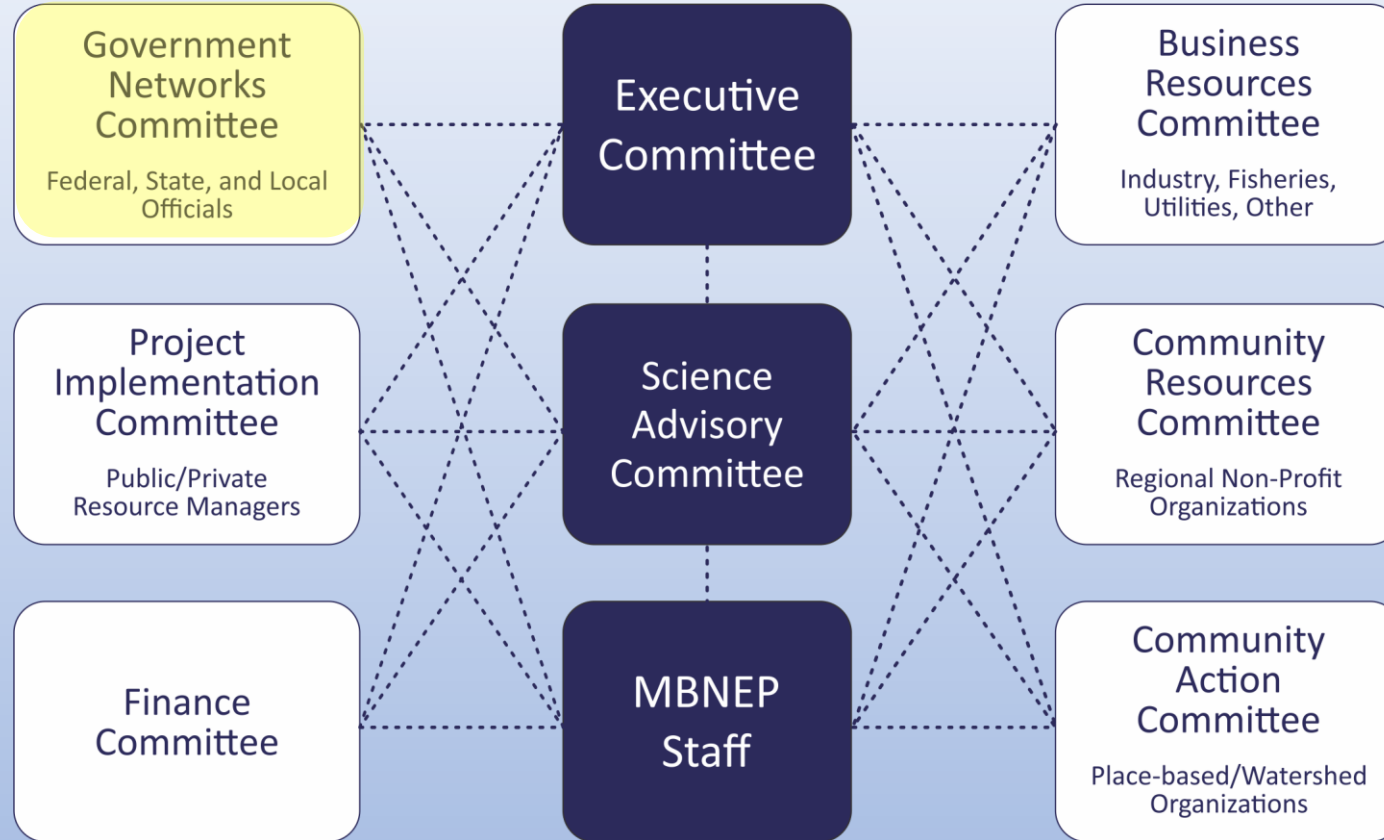
# MBNEP Management Conference Activities



## GNC

- Coal ash education
- Watershed planning status
- Legislative activities

# MBNEP Management Conference Activities



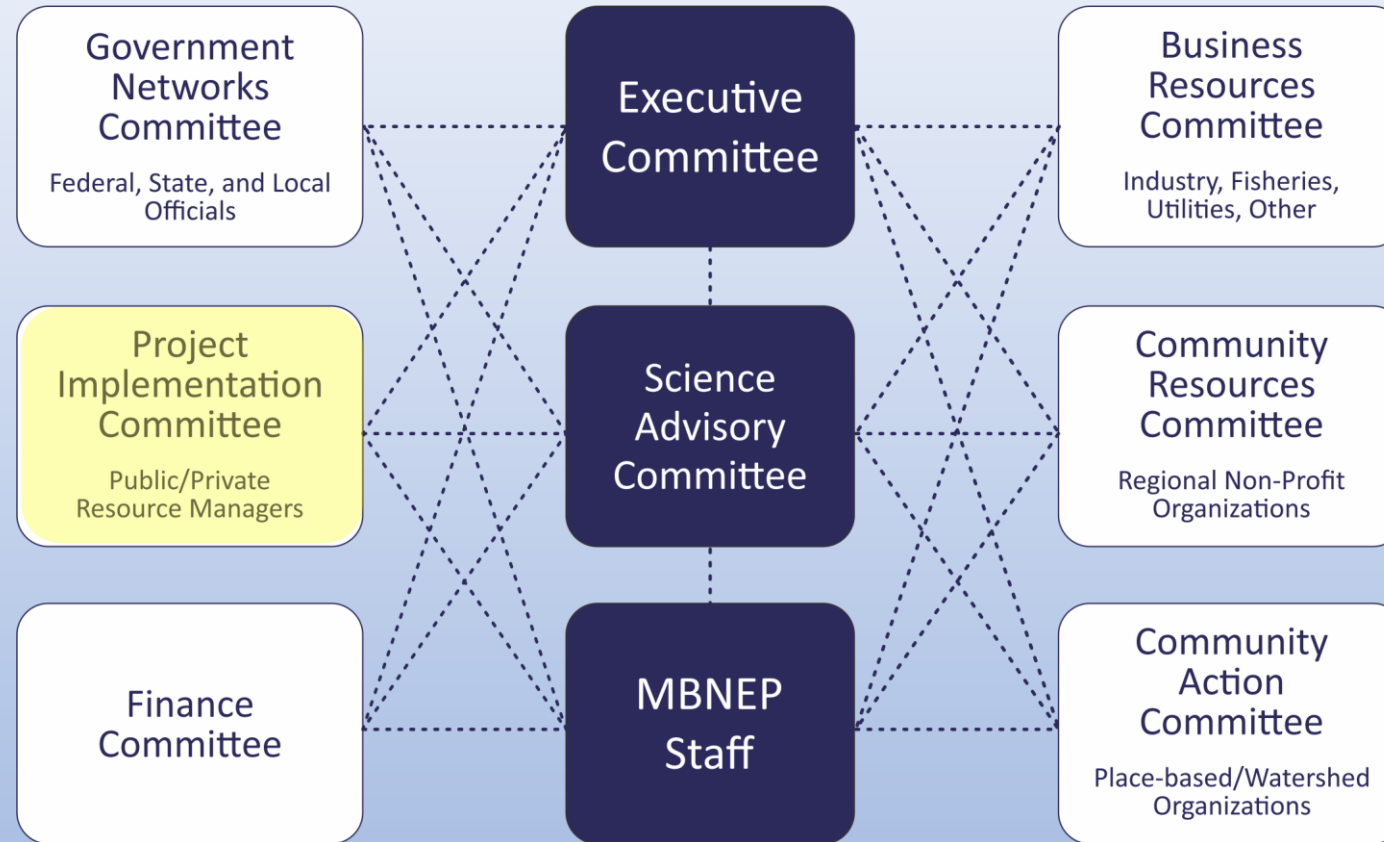
# MBNEP Management Conference Activities

## GNC

- Coal ash education
- Watershed planning status
- Legislative activities

## PIC

- Watershed planning
- Project implementation
- Shorelines planning



# MBNEP Management Conference Activities

## GNC

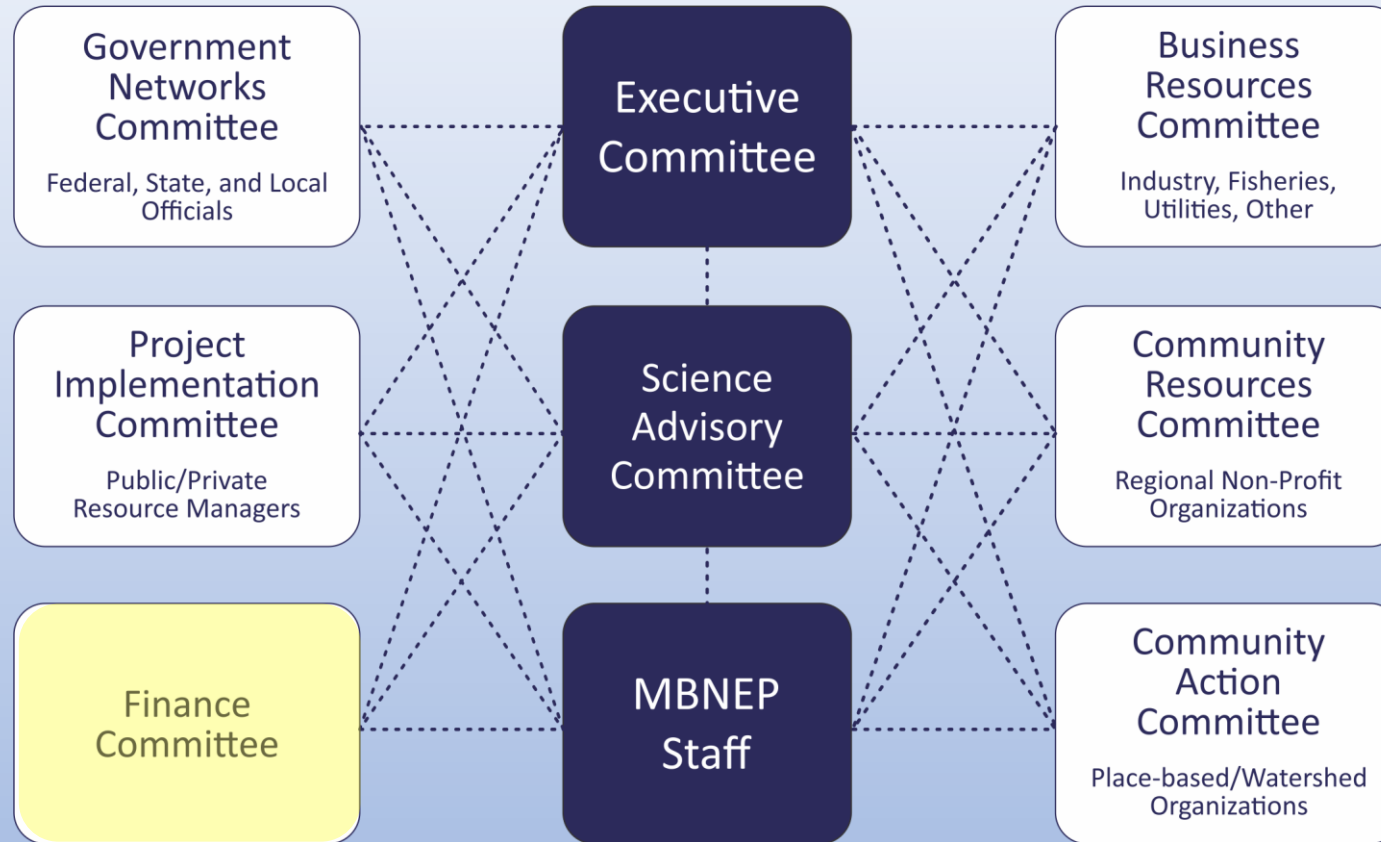
- Coal ash education
- Watershed planning status
- Legislative activities

## PIC

- Watershed planning
- Project implementation
- Shorelines planning

## FC

Strategizing for long-term sustainability for the MBNEP



# MBNEP Management Conference Activities

## GNC

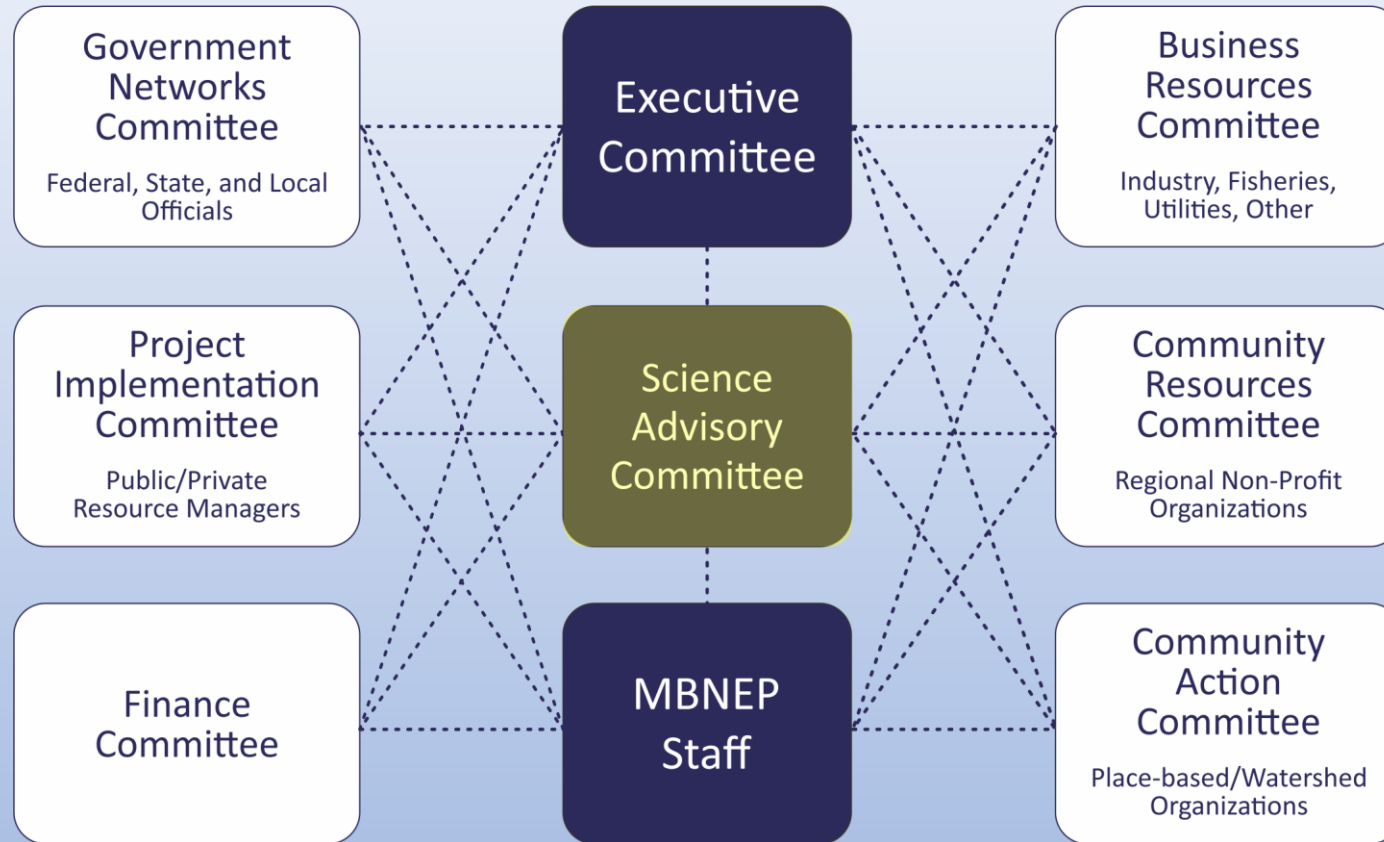
- Coal ash education
- Watershed planning status
- Legislative activities

## PIC

- Watershed planning
- Project implementation
- Shorelines planning

## FC

Strategizing for long-term sustainability for the MBNEP



## SAC

- Stressor evaluation
- Watershed modeling
- Comprehensive ecosystem modeling for greater Watershed

# MBNEP Management Conference Activities

## GNC

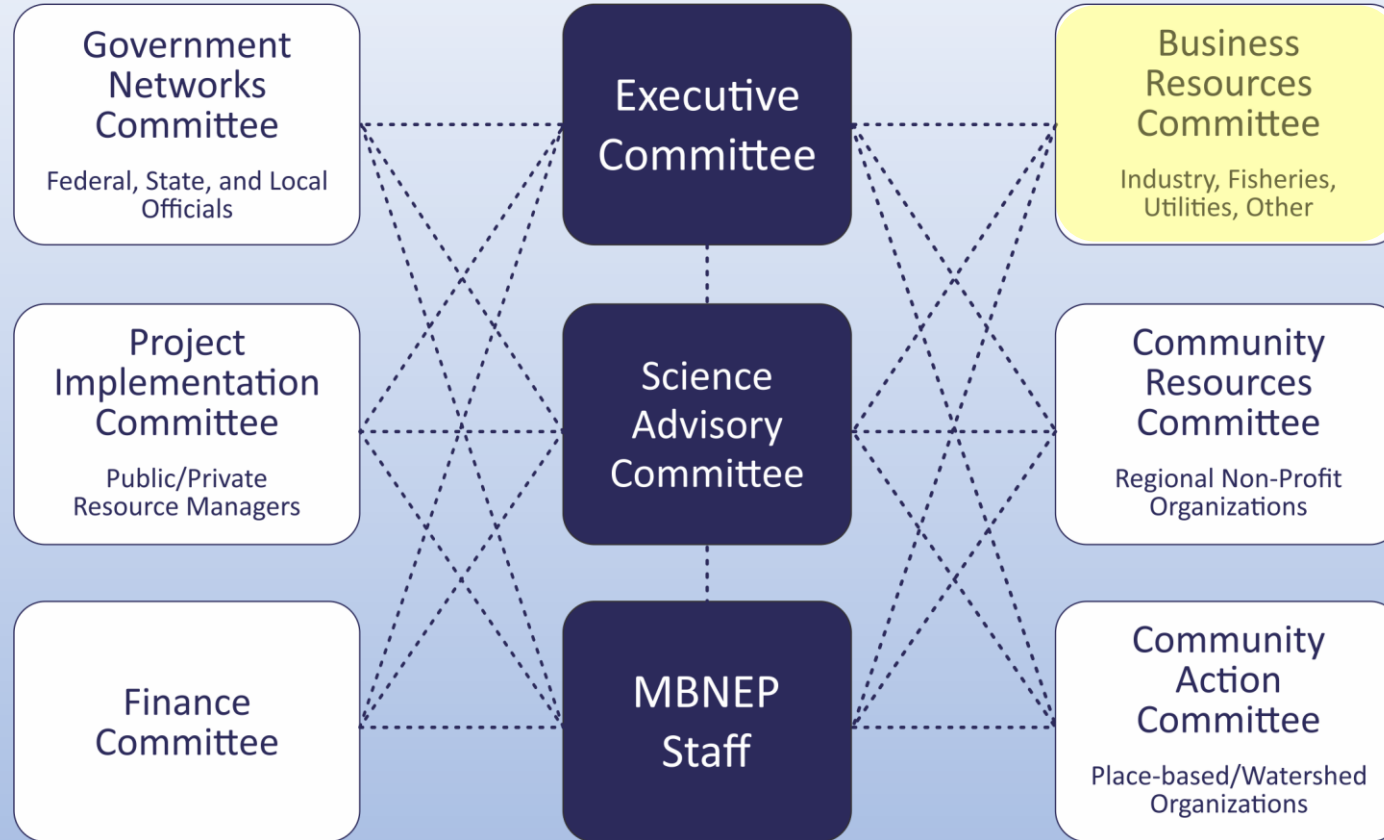
- Coal ash education
- Watershed planning status
- Legislative activities

## PIC

- Watershed planning
- Project implementation
- Shorelines planning

## FC

Strategizing for long-term sustainability for the MBNEP



## BRC

- Oyster aquaculture support for restoration
- Marketing campaign for farm-raised oysters
- Access to capital for fishing interests

## SAC

- Stressor evaluation
- Watershed modeling
- Comprehensive ecosystem modeling for greater Watershed

# MBNEP Management Conference Activities

## GNC

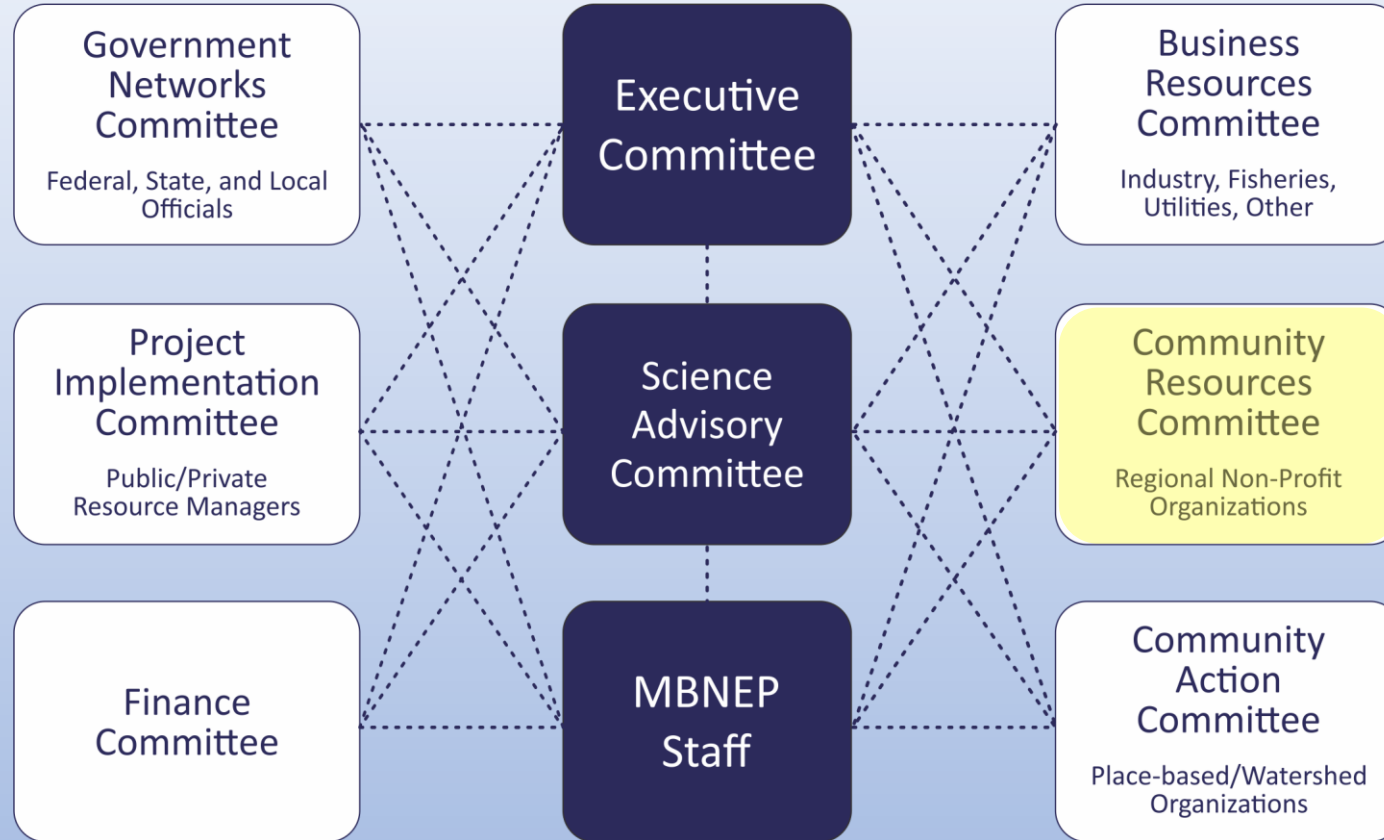
- Coal ash education
- Watershed planning status
- Legislative activities

## PIC

- Watershed planning
- Project implementation
- Shorelines planning

## FC

Strategizing for long-term sustainability for the MBNEP



## BRC

- Oyster aquaculture support for restoration
- Marketing campaign for farm-raised oysters
- Access to capital for fishing interests

## CRC

Trash, litter, and marine debris work plan development

## SAC

- Stressor evaluation
- Watershed modeling
- Comprehensive ecosystem modeling for greater Watershed

# MBNEP Management Conference Activities

## GNC

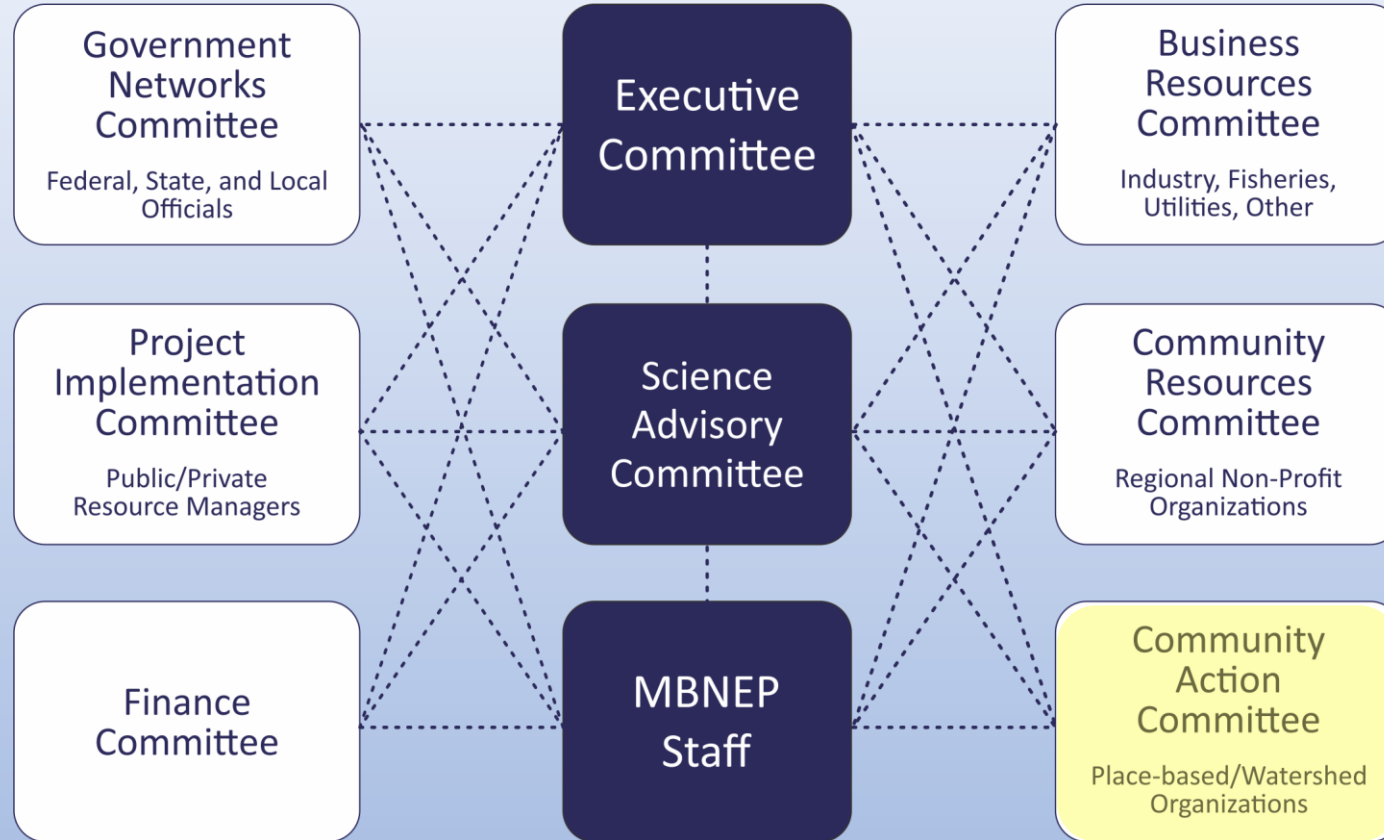
- Coal ash education
- Watershed planning status
- Legislative activities

## PIC

- Watershed planning
- Project implementation
- Shorelines planning

## FC

Strategizing for long-term sustainability for the MBNEP



## SAC

- Stressor evaluation
- Watershed modeling
- Comprehensive ecosystem modeling for greater Watershed

## BRC

- Oyster aquaculture support for restoration
- Marketing campaign for farm-raised oysters
- Access to capital for fishing interests

## CRC

Trash, litter, and marine debris work plan development

## CAC

Focus on citizen science: WQ, flooding, SSOs, phytoplankton, DO, invasive and native plant species, and other data collection opportunities