

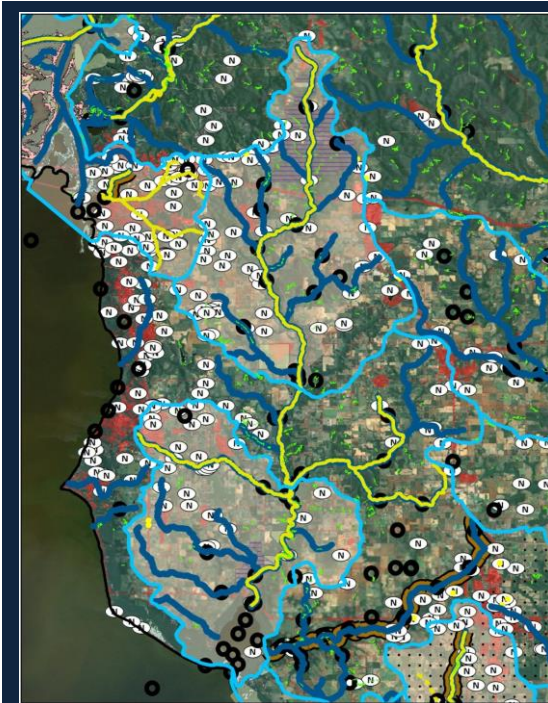


Mobile Bay National Estuary Program Project Implementation Committee
Blakeley Classrooms, 5 Rivers Delta Resource Center
Thursday, June 6, 2013 at 10 a. m.

Agenda

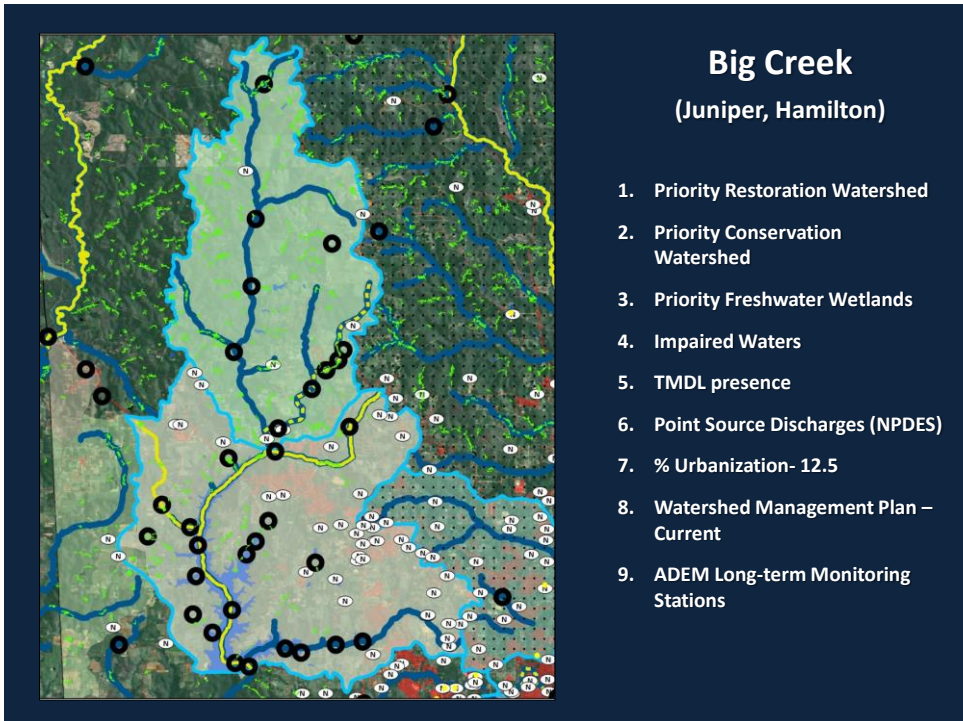
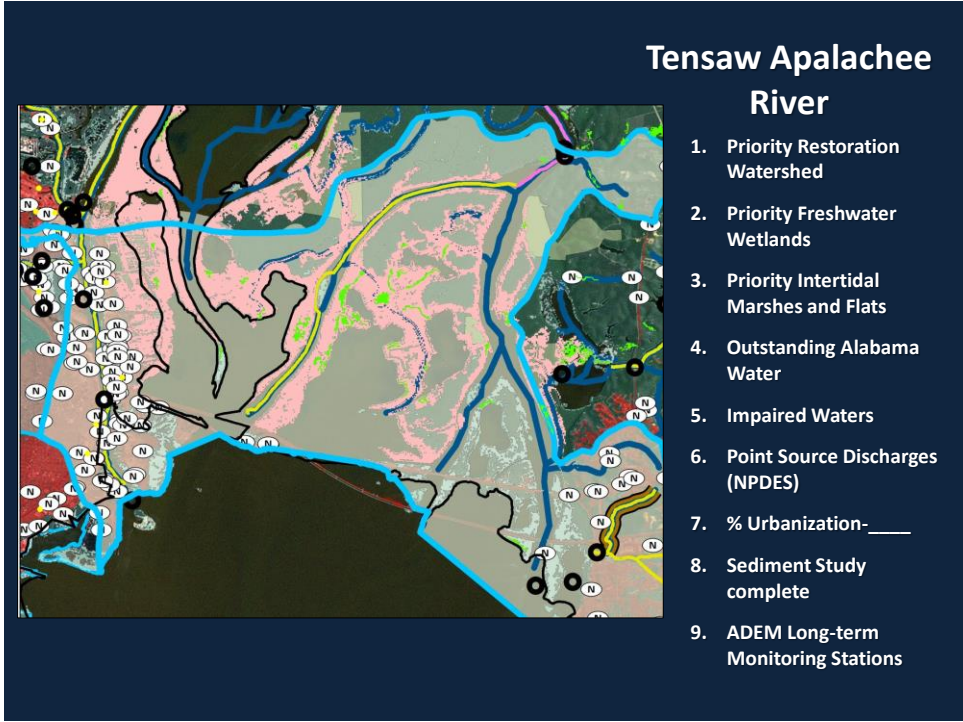
1. Call to Order
2. Approval of Minutes – February 21, 2013
3. Election of new PIC co-chairs
4. Discussion of results of watershed prioritization efforts undertaken at February 21 PIC Meeting and – Development of five-year CCMP Restoration Plan
5. New Business
6. Adjourn

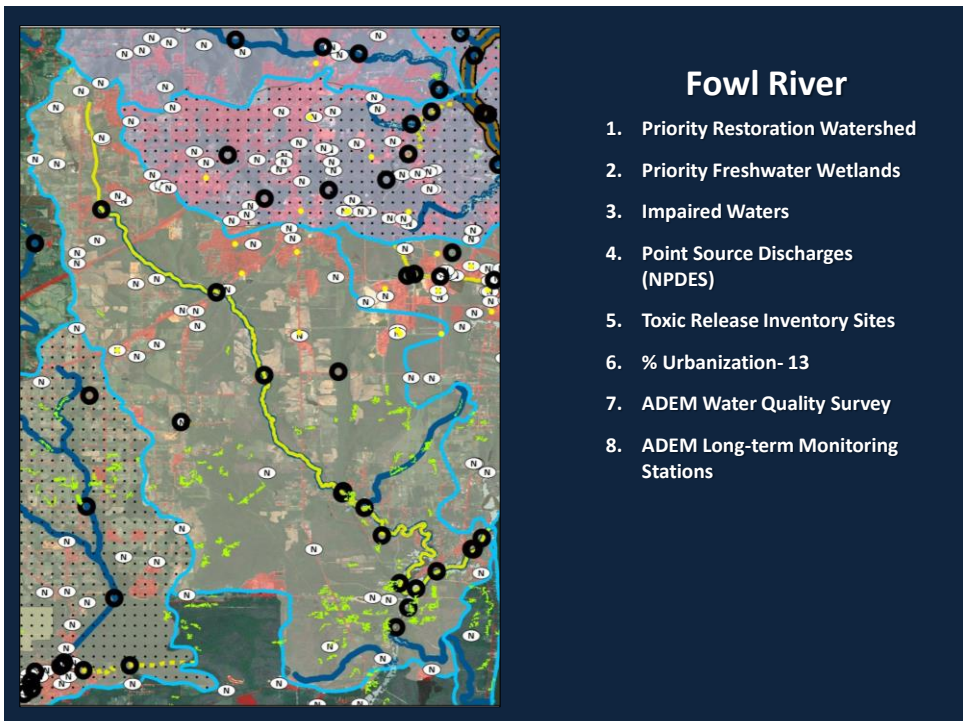
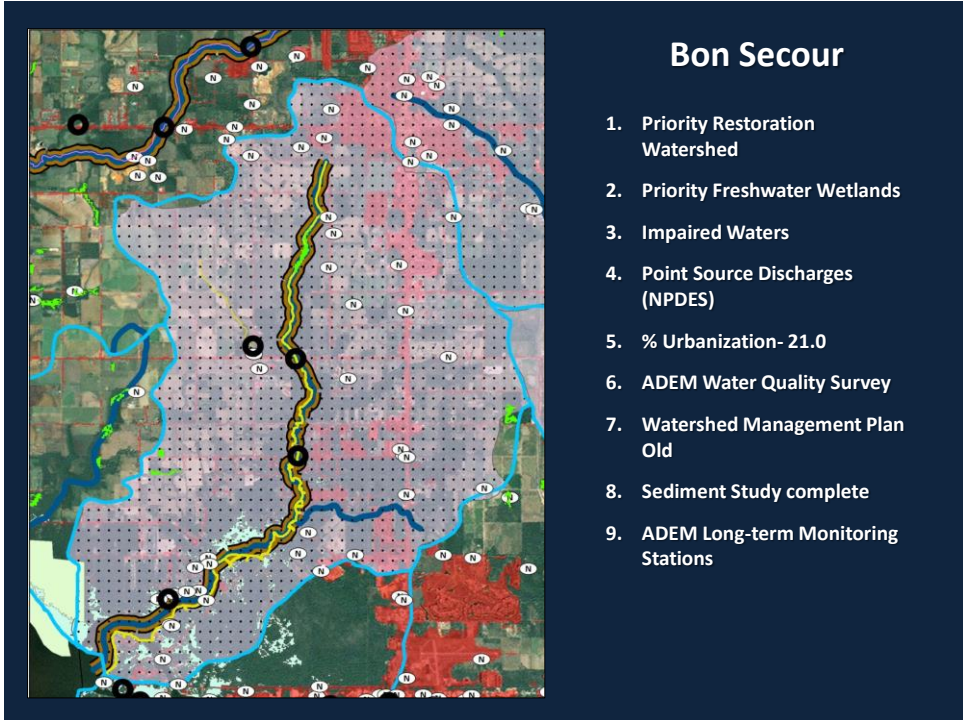
Mobile Bay National Estuary Program							
Project Implementation Committee Meeting							
Watershed Ranking Exercise Results							
	#1	#2	#3				
#Respondents	1	2	3	4	5	Total	Wt.Score
Fish River	1	0	3	21	31	56	4.4
Tensaw Apalachee	1	4	3	17	32	57	4.3
Big Creek	1	3	8	12	31	55	4.3
Bon Secour	0	1	7	26	22	56	4.2
Fowl River	1	4	7	15	30	57	4.2
West Fowl River	0	5	8	18	26	57	4.1
DOG River	3	4	10	15	26	58	4.0
Deer River	1	4	11	21	18	55	3.9
Grand Bay Swamp	0	4	8	22	11	45	3.9
Graham Bayou	3	7	17	15	13	55	3.5
Bayou La Batre River	1	7	22	19	8	57	3.5
Oyster Bay	1	6	26	15	9	57	3.4
Hammock Creek	3	9	18	11	14	55	3.4
Dauphin Island	6	6	18	10	15	55	3.4
Little Lagoon	4	11	14	12	12	53	3.3
Upper Blackwater	2	8	23	18	5	56	3.3
Rains Creek	4	12	19	14	7	56	3.1
Halls Creek	9	9	19	11	9	57	3.0
Skunk Bayou	6	16	16	13	7	58	3.0
Negro Creek	4	17	26	5	2	54	2.7
Cedar Creek	9	19	18	9	1	56	2.5



Fish River (Upper, Lower)

1. Priority Restoration Watershed
2. Priority Freshwater Wetlands
3. Priority for Acquisition
4. Impaired Waters
5. Point Source Discharges (NPDES)
6. % Urbanization- 12.4
7. Watershed Management Plan – Current
8. ADEM Long-term Monitoring Stations





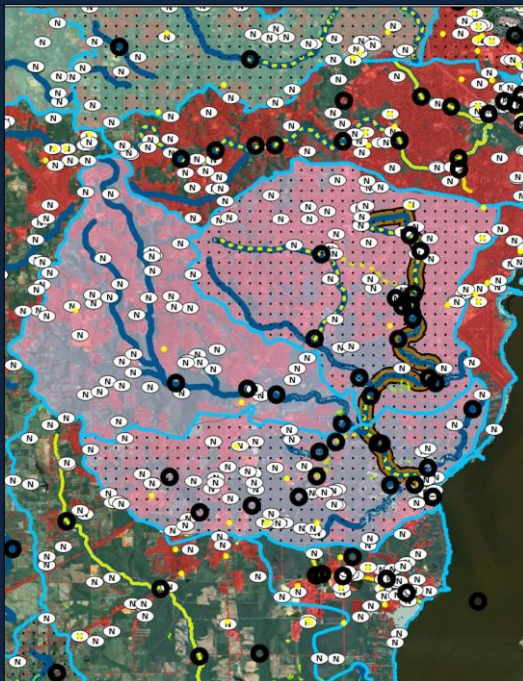
West Fowl River



1. Priority Freshwater Wetlands
2. Priority Intertidal Marshes and Flats
3. Priority for Acquisition
4. Protected Lands
5. Point Source Discharges (NPDES)
6. % Urbanization- 6.4
7. ADEM Long-term Monitoring Stations

Dog River

(Upper, Lower, Halls Mill)



1. TMDL presence
2. Point Source Discharges (NPDES)
3. Toxic Release Inventory Sites
4. % Urbanization- 57.4
5. ADEM Water Quality Survey
6. Watershed Management Plan Old
7. Sediment Study complete
8. ADEM Long-term Monitoring Stations



Deer River

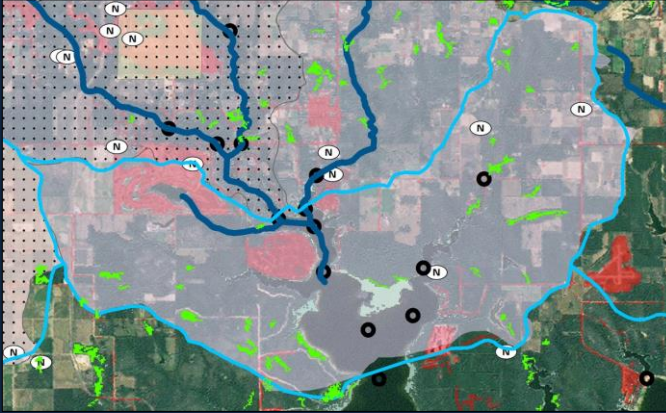
1. Priority Restoration Watershed
2. Priority Freshwater Wetlands
3. Priority Intertidal Marshes and Flats
4. Impaired Waters
5. Point Source Discharges (NPDES)
6. Toxic Release Inventory Sites
7. % Urbanization- 37.3
8. ADEM Long-term Monitoring Stations



Grand Bay Swamp

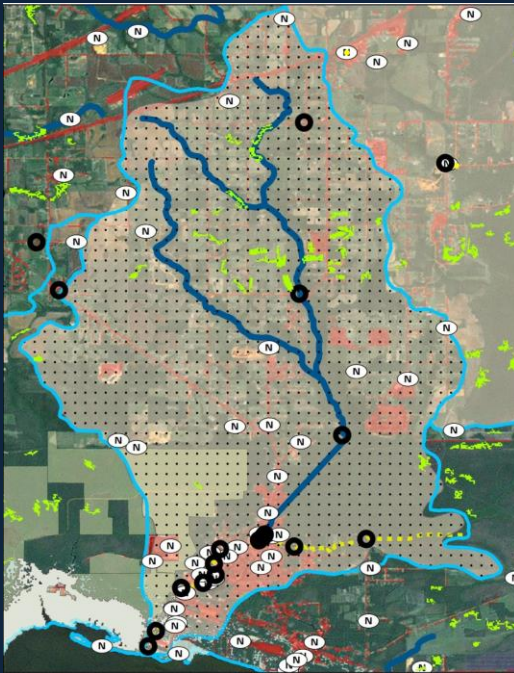
1. Priority Freshwater Wetlands
2. Priority Intertidal Marshes and Flats
3. Priority for Acquisition
4. Point Source Discharges (NPDES)
5. % Urbanization- 2.1
6. ADEM Long-term Monitoring Stations

Graham Bayou



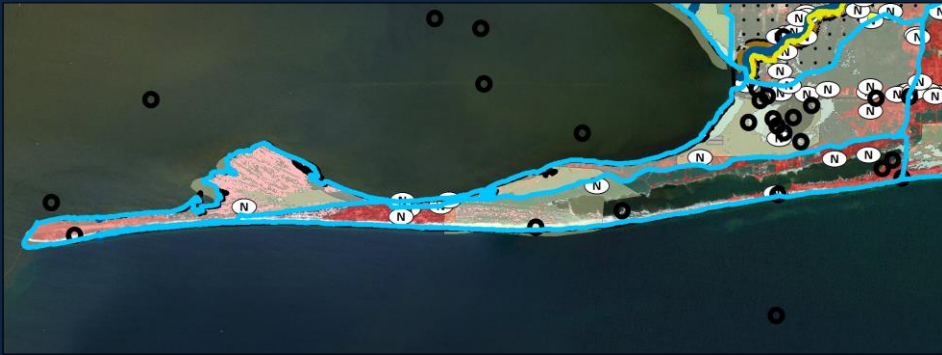
1. Priority Conservation Watershed
2. Priority Freshwater Wetlands
3. Priority Intertidal Marshes and Flats
4. Outstanding Alabama Water
5. Point Source Discharges (NPDES)
6. % Urbanization- 10.7
7. Watershed Management Plan Old
8. Watershed Management Plan – Current
9. ADEM Long-term Monitoring Stations

Bayou La Batre River



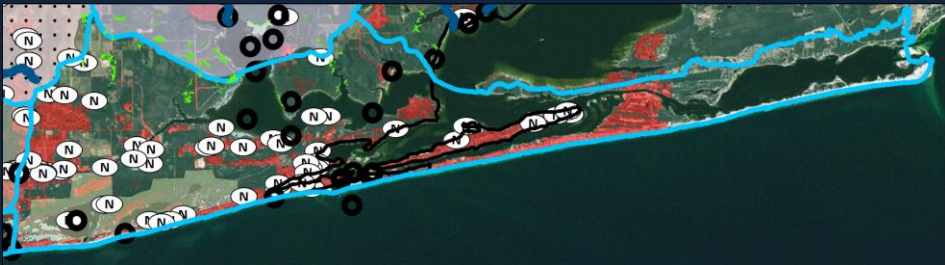
1. Priority Restoration Watershed
2. Priority Freshwater Wetlands
3. TMDL presence
4. Point Source Discharges (NPDES)
5. % Urbanization- 13.0
6. ADEM Water Quality Survey
7. ADEM Long-term Monitoring Stations

Oyster Bay



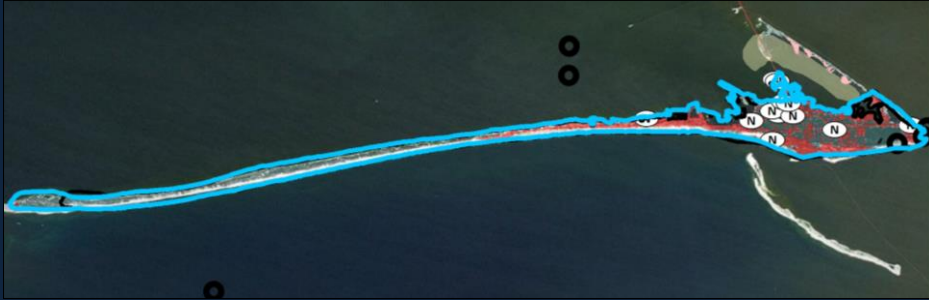
1. Priority Restoration Watershed
2. Priority Intertidal Marshes and Flats
3. Point Source Discharges (NPDES)
4. % Urbanization- 22.3
5. ADEM Long-term Monitoring Stations

Hammock Creek



1. Priority Intertidal Marshes and Flats
2. Priority for Acquisition
3. Protected Lands
4. Point Source Discharges (NPDES)
5. % Urbanization- 24.7
6. ADEM Long-term Monitoring Stations

Dauphin Island

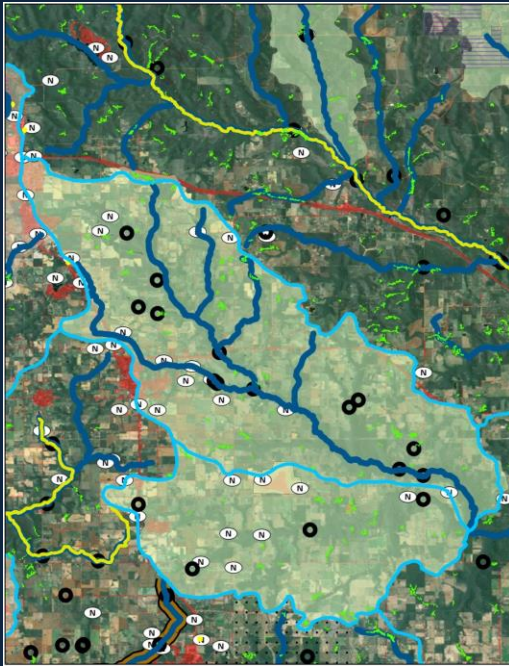


1. Priority Intertidal Marshes and Flats
2. Protected Lands
3. Point Source Discharges (NPDES)
4. % Urbanization- _____
5. Watershed Management Plan – Current
6. ADEM Long-term Monitoring Stations

Little Lagoon

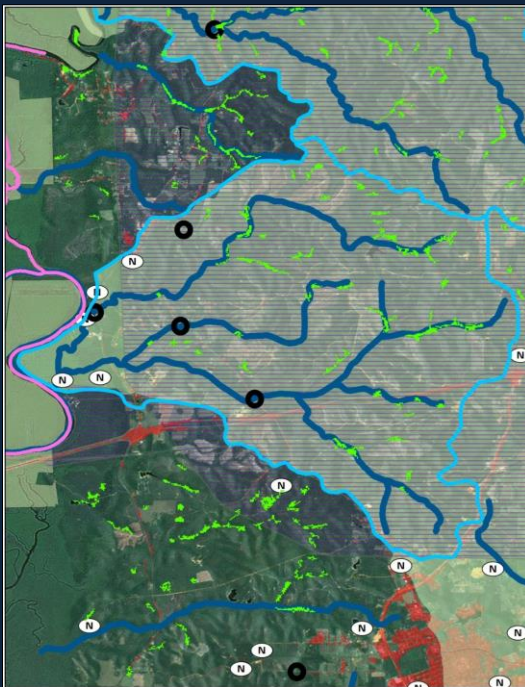


1. Priority Intertidal Marshes and Flats
2. Priority for Acquisition
3. Protected Lands
4. Point Source Discharges (NPDES)
5. % Urbanization- 29.8
6. Watershed Management Plan – Current
7. ADEM Long-term Monitoring Stations



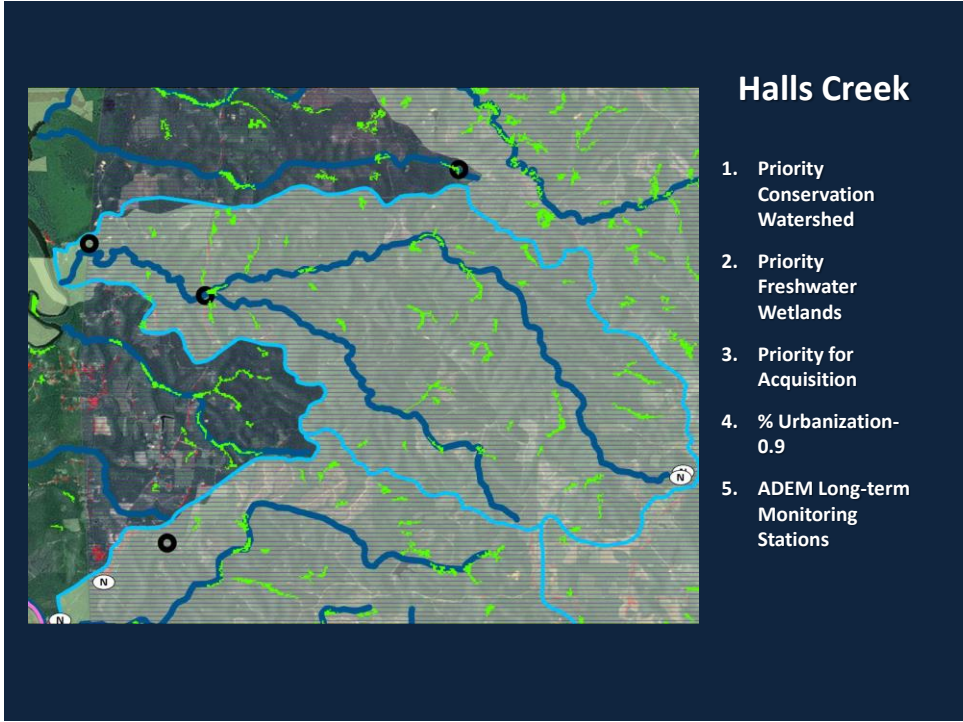
Upper Blackwater

1. Priority Conservation Watershed
2. Priority Freshwater Wetlands
3. Point Source Discharges (NPDES)
4. % Urbanization- 6.3
5. ADEM Long-term Monitoring Stations

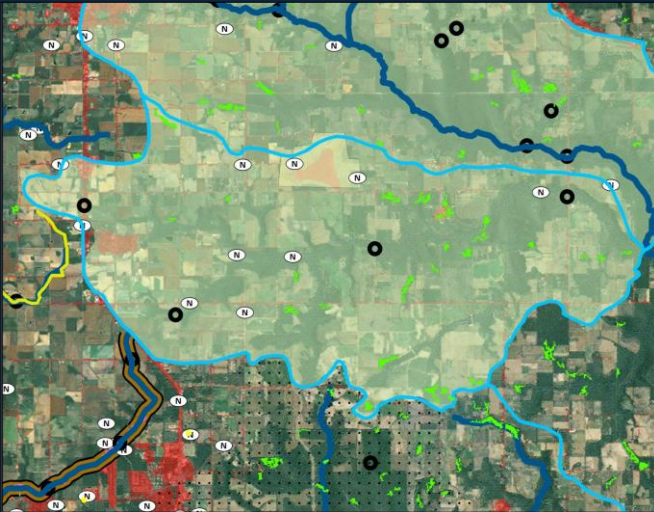


Rains Creek

1. Priority Conservation Watershed
2. Priority Freshwater Wetlands
3. Priority for Acquisition
4. Protected Lands
5. Point Source Discharges (NPDES)
6. % Urbanization- 3.3
7. ADEM Long-term Monitoring Stations

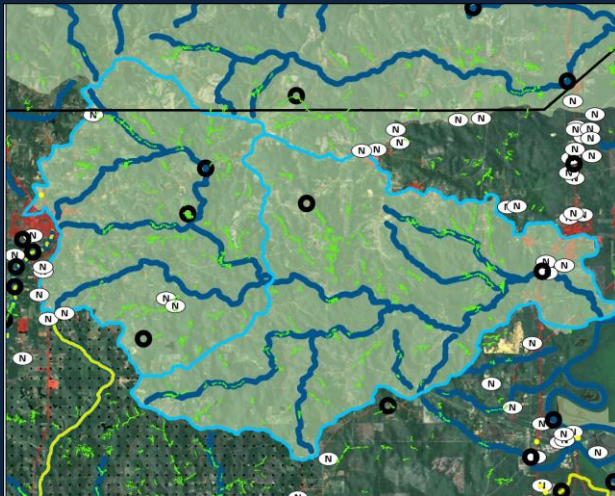


Negro Creek



1. Priority Conservation Watershed
2. Priority Freshwater Wetlands
3. Point Source Discharges (NPDES)
4. % Urbanization- 7.0
5. ADEM Long-term Monitoring Stations

Cedar Creek (Upper, Lower)



1. Priority Conservation Watershed
2. Priority Freshwater Wetlands
3. Point Source Discharges (NPDES)
4. % Urbanization- 2.8
5. ADEM Long-term Monitoring Stations